

PART OF SEC. 31-32, T.7N., R.3E., S.L.B. & M.
EVERGREEN PARK SUBDIVISION NO. 1

LOTS 50-56, 79-85, 173-176

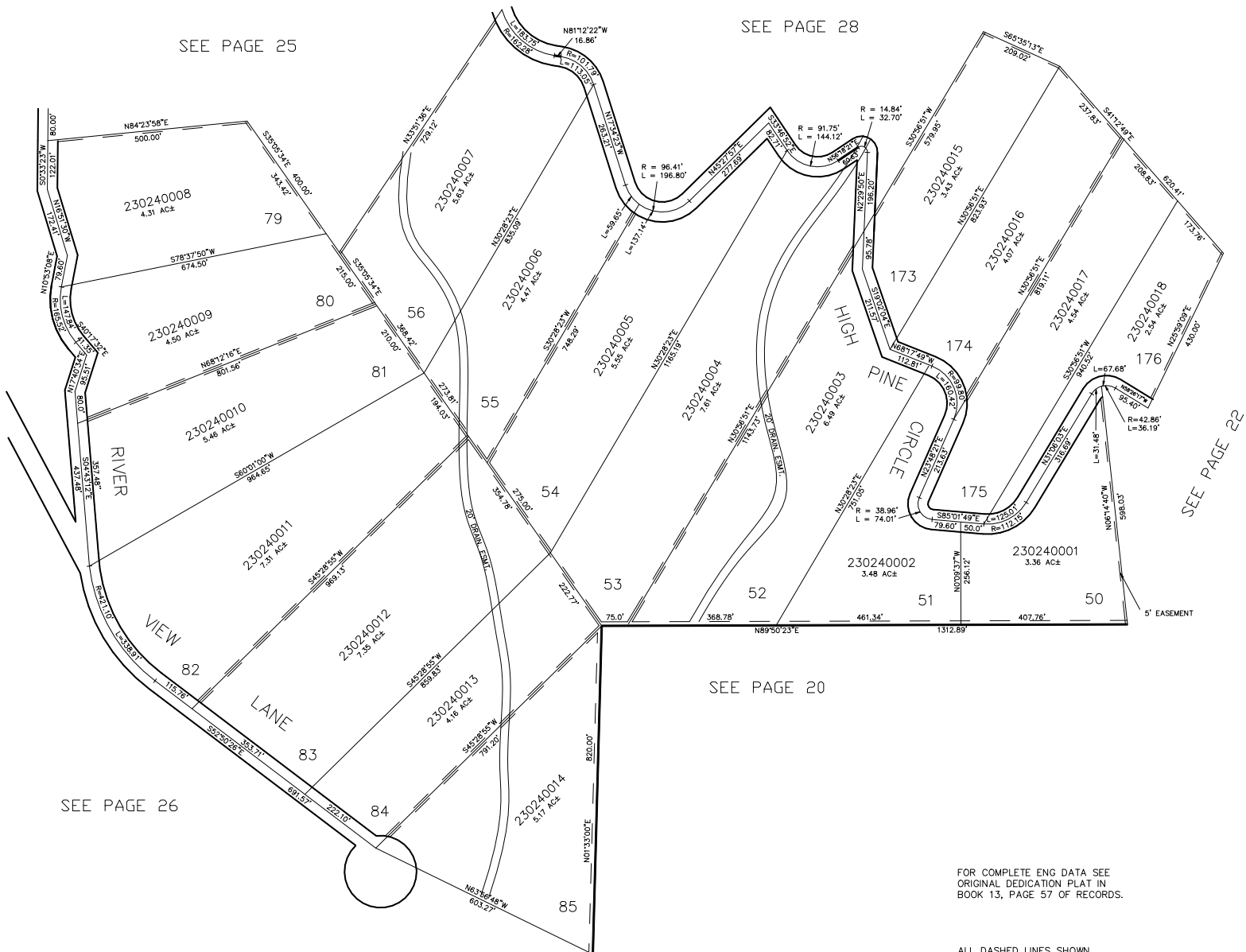
IN WEBER COUNTY

SCALE 1" = 200'

TAXING UNIT: 58

SEE PAGE 25

SEE PAGE 28



SEE PAGE 26

SEE PAGE 20

SEE PAGE 22

FOR COMPLETE ENG DATA SEE
 ORIGINAL DEDICATION PLAT IN
 BOOK 13, PAGE 57 OF RECORDS.

ALL DASHED LINES SHOWN
 ON LOT LINES ARE 10' UTILITY
 EASEMENTS UNLESS OTHERWISE NOTED.